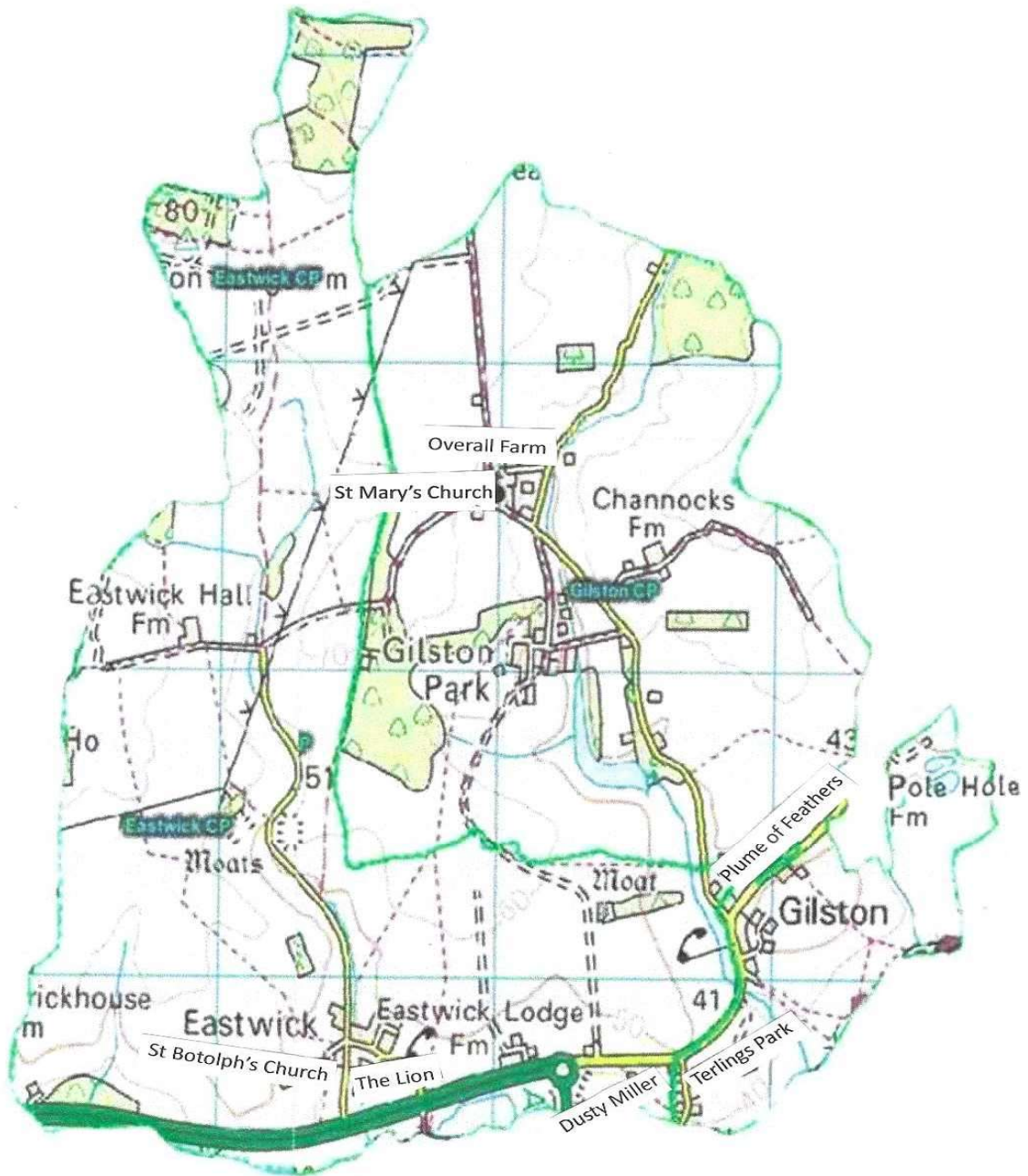


# EASTWICK AND GILSTON PARISH MAGAZINE



MARCH 2026

# GILSTON AND EASTWICK VILLAGE HALL MANAGEMENT COMMITTEE



See below a calendar of all clubs and classes that take place at our hall.  
For more information about booking the hall go to [www.eastwickgilston.org.uk](http://www.eastwickgilston.org.uk)

<b>MONDAY</b>	<b>Parish Council</b>	Parish Clerk- Christine Law 01279 411646 Meet on the 2 <sup>nd</sup> Monday of January, March, May, July, September & November	8.00pm – 10.00pm
<b>TUESDAY</b>	<b>Puppy Classes</b>	<a href="mailto:Sam@thedogcoach.co.uk">Sam@thedogcoach.co.uk</a>	6.30pm – 7.30pm
<b>WEDNESDAY</b>	<b>Phonics Fox</b>	Amy Abbitt – <a href="mailto:amy@thephonicsfox.com">amy@thephonicsfox.com</a>	9.30am – 11.30am
	<b>Pilates</b>	Adam Benton – 07966683193	6.00pm – 7.00pm
		Hall Cleaning	1.00pm – 3.00pm
<b>THURSDAY</b>	<b>Baby Massage</b>	Elena Luck	9.30am – 2.30pm
	<b>Irish Dancing</b>	Amanda Hennigan – 07713974077	6.30pm – 8.30pm
<b>FRIDAY</b>	<b>Chair Pilates</b>	Sarah-Jane - 07971338980	11.00am – 12noon
<b>SATURDAY</b>			
<b>SUNDAY</b>			

**Chair:** Carolyn Laing

**Vice Chair:** Janine Bryant

**Treasurer:** Linda Harvey

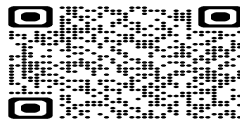
**Bookings Officer:** Erin Reilly 07710271611

**Holding Trustee:** Keith Harvey & Mary Jackson

**Booking enquiries:** [gevillagehall@gmail.com](mailto:gevillagehall@gmail.com) for all booking enquiries or go to the Village Hall new web site:  
**[hallbookingonline.com/gilstoneastwick](http://hallbookingonline.com/gilstoneastwick)** to see if the date you require is free and make a provisional booking.

## USEFUL CONTACT DETAILS

**EASTWICK & GILSTON PARISH COMMUNITY WEB SITE:**



[eastwickandgilstonparish.org.uk](http://eastwickandgilstonparish.org.uk)

[www.gilston.info](http://www.gilston.info)

[gilston@meeting-place.uk](mailto:gilston@meeting-place.uk)

**HUNSDON EASTWICK & GILSTON NEIGHBOURHOOD PLAN GROUP WEBSITE:** [hegnp.org.uk](http://hegnp.org.uk) - For all regular updates and information from the group you can subscribe to the mailing list at this link: <https://tinyletter.com/gilston>.

**EAST HERTS DISTRICT COUNCIL:** <https://www.eastherts.gov.uk>. Telephone 01279 655261

**HERTFORDSHIRE COUNTY COUNCIL:** <https://www.hertfordshire.gov.uk>. Telephone 030012234040

### FLY TIPPING

Report all Fly Tipping to East Herts Council on 01279 655261 or [enquiries@eastherts.gov.uk](mailto:enquiries@eastherts.gov.uk), [eastherts.gov.uk/fly-tipping](http://eastherts.gov.uk/fly-tipping). In an emergency situation contact the Police on 999.

**HIGH WYCH POST OFFICE** :Located at the rear of High Wych Memorial Hall. Open **Mondays** 9.30am – 12.30pm . **Thursdays** 9.30am – 12.30pm.

# KNOW YOUR PARISH COUNCILLORS

## EASTWICK AND GILSTON PARISH COUNCIL



### CHAIRMAN

MARK ORSON  
Neighbourhood Planning Group  
Footpaths Officer



### VICE CHAIR

JANINE BRYANT  
Neighbourhood Planning Group



LINDA HARVEY  
Highways  
Village Hall Committee



WERNER MARX



JAMES BEAZLEY



PARISH CLERK  
CHRISTINE LAW  
01279 411646  
[clerk@eastwickandgilstonparish.gov.uk](mailto:clerk@eastwickandgilstonparish.gov.uk)



JOHN DUNLOP  
EAST HERTS DISTRICT  
COUNCILLOR



ERIC BUCKMASTER  
HERTFORDSHIRE  
COUNTY COUNCILLOR

### CONTACT DETAILS - Email Addresses:

MARK ORSON - [cldr.m.orson@eastwickandgilstonparish.gov.uk](mailto:cldr.m.orson@eastwickandgilstonparish.gov.uk)  
JANINE BRYANT - [cldr.j.bryant@eastwickandgilstonparish.gov.uk](mailto:cldr.j.bryant@eastwickandgilstonparish.gov.uk)  
LINDA HARVEY - [cldr.l.harvey@eastwickandgilstonparish.gov.uk](mailto:cldr.l.harvey@eastwickandgilstonparish.gov.uk)  
WERNER MARX - [cldr.w.marx@eastwickandgilstonparish.gov.uk](mailto:cldr.w.marx@eastwickandgilstonparish.gov.uk)  
JAMES BEAZLEY - [cldr.j.beazley@eastwickandgilstonparish.gov.uk](mailto:cldr.j.beazley@eastwickandgilstonparish.gov.uk)  
ERIC BUCKMASTR - [eric.buckmaster@hertfordshire.gov.uk](mailto:eric.buckmaster@hertfordshire.gov.uk)  
JOHN DUNLOP - [john.dunlop@eastherts.gov.uk](mailto:john.dunlop@eastherts.gov.uk)

# EASTWICK AND GILSTON PARISH COUNCIL

## PARISH COUNCIL BUSINESS MEETING

NEXT MEETING WILL BE ON  
MONDAY 9<sup>TH</sup> MARCH 2026 – 8.00PM

THIS IS THE ANNUAL PARISH MEETING ( this is a meeting of the electorate and not a Parish Council meeting) This will be followed by a Full Business Council Meeting

VILLAGE HALL, PYE CORNER

All residents are most welcome to attend our council meetings.

CHRISTINE LAW - PARISH CLERK  
01279 411646 clerk@eastwickandgilstonparish.gov.uk

### WE STILL HAVE TWO VACANCIES TO BE FILLED FOR PARISH COUNCILLORS IF YOU MIGHT BE INTERESTED PLEASE CONTACT THE PARISH CLERK OR ONE OF OUR PARISH COUNCILLORS

++++  
The Parish Council Business Meeting of Monday 12<sup>th</sup> January 2026. Village Hall, Pye Corner, Gilston 8.00pm  
**PRESENT:** Cllr's Beazley, Bryant, Marx, Orson, 0 member of the public. Christine Law (Clerk) in attendance. Cllr Buckmaster and Cllr Dunlop's reports are attached to these minutes and can also be found on the web site.

++++  
**PUBLIC PARTICIPATION**

- a) No questions were raised.

**61) APOLOGIES FOR ABSENCE**

- a) Cllr Eric Buckmaster (CC), Cllr John Dunlop (DC),

**62) RECEIVE COUNCILLOR'S DECLARATION OF INTERESTS**

- a) None.

**63) MINUTES FOR APPROVAL**

- a) The minutes of 10th November 2025 meeting were proposed by Cllr Bryant and seconded by Cllr Marx. Signed by Cllr Orson as a true record.

**64) ACCOUNTS**

- a) Clerks report to the Council of accounts summary (appendix 1).
  - b) Clerks Salary Award. This was explained and agreed. The SLCC & NALC made the decision in April 2025 to a pay raise for all Clerks. This will come into effect this this council on the 1st February 2026.
  - c) Precept for 2026-2027 form was completed for this coming year. Clerk to send to District.
- a-b proposed by Cllr Harvey and seconded by Cllr Beazley.

**65) PLANNING AND ASSOCIATED APPLICATIONS**

- a) Grassland, Pye Corner, Gilston – 3/23/1110/FUL – Retrospective change of use of buildings A (Class e). B (class B8), c (Class B8), D (Class B8), E (Class B8) and F (Class E). Awaiting decision.

- b) X/25/0215/CND – Discharge condition 6 (Strategic Landscape Masterplan) attached to 3/19/1045/OUT – Land North of the Stort Valley and the A414 Gilston, Herts. Awaiting decision.
- c) The Old Rectory, Gilston Lane, Gilston – 3/25/1522/FUL – Conversion of and alterations to existing detached garage to form 1 x 2-bed maisonette to first floor with associated works including creation of residential curtilage and bin/cycle store (retrospective) Application has been refused.
- d) 4 Vine Grove, Pye Corner, Gilston – 3/25/1508/HH – Part two storey and part single storey rear extension, insertion of a new first floor side window. Application has been refused.
- e) 7 Johnson Street, Terlings Park, - 3/25/1757/HH – Remove glazed roof to the rear, new first floor extension. Application has been granted.
- f) Display of 1 x non-illuminated metal roadside sign on timber post with a base mounted timber planter for Gilston. On road verge south and east of entrance to garages, of Church Cottages, Gilston – 3/25/1658/ADV – Has been granted.
- g) 5no. Interpretation Boards, 2no. Flag Poles and 1no. QR post in Public Open Spaces at Terlings Park – Land east of Terlings Avenue, Southeast and south of Bowlby Hill and south and south-west of Turvin Crescent – 3/25/1620/ADV. Awaiting decision.
- h) Proposed Garage at Channoeks Farm. 3/25/18915/HH. Awaiting decision.

## 66) PARISH PATHS

- a) Cllr Orson reported
  - i) Maintenance of non-tenanted and uncultivated land. There has been a general problem with uncultivated PFP land growing a good crop of thistles and generally being left to deteriorate. Clouds of thistle down blown across Pye Corner / Gilston Lane (and no doubt other areas) from around early July to mid-August. This issue was raised with PFP at the most recent Gilston Stakeholders Liaison Meeting and PFP responded post meeting that “all of the areas that would affect the villages thistles are being topped but if you want to make any specific problem areas from your perspective, I will make sure we focus our efforts there. The land for villages 5 and 6 will be having ground investigations and noise surveys early next year post the archaeology but once that has happened, we will be looking to get the land back into farming where not required for the sustainable transport corridor between Village 1 and Village 7.”
- b) Knight Frank has provided an update for the maintenance of footpaths E16 and 20:
  - i) Footpath E16 – overhanging branches cleared and grass trimmed. Bench at the top has been cleared around too.
  - ii) Footpath E20 – Bench surroundings trimmed.
  - iii) Footpath E16 & E9 Cross Field Paths – These are due to be cut and sprayed ASAP. We will be installing pairs of post either side of the path cross field to better de-mark the route (as we discussed with you last year).
  - iv) In addition, they have identified the following maintenance works that would be beneficial to undertake. This includes replacement of the broken kissing gate ([///green.secret.abode](#)) and replacement of a rotten wooden step on the footbridge at ([///purple.strike.crate](#)) which we understand to be HCC responsibility. However, Places for People are keen to continue with their collaborative approach with HCC and so would be willing to organise these works themselves to aid your busy schedule and as a gesture of goodwill to the community.

## 67) COMMUNITY FORUM/ NEIGHBOURHOOD DEVELOPMENT

- a) Cllr Bryant reported:
  - i) EHC Gilston Area Community Forum held 14th October 2025

- (1) EHC, Places for People and Affinity Water presentations are available at the East Herts Gilston Area Community Forum webpage <https://www.eastherts.gov.uk/planning-and-building/community-forums/gilston-area-community-forum>.

Previous forum presentations are also available here.

The next Community Forum is expected to be held during February 2026.

We urge residents to attend these forums and, if possible, submit questions, via email, at least 10 days before to [community.forum@eastherts.gov.uk](mailto:community.forum@eastherts.gov.uk)

You can also ask for specific topics you want to learn more about to be included in future meetings.

## ii) Neighbourhood Development

- (1) Judicial Review for the two Gilston outline applications (Villages 1-6 and Village 7) again found in favour of East Herts Council. The following is from the HGGT website, 3rd Dec 2025 “A Court of Appeal ruling has formally ended the legal challenge to the Gilston Area’s outline planning permission, unlocking the next stage of delivery for this major part of Harlow & Gilston Garden Town.”

.....

..... “After two separate High Court judgments upheld the council’s position, the Court of Appeal has now confirmed that no further right of appeal will be granted.”

## iii) Strategic Landscape Masterplan - amended

- (1) Village 1 – 6 X/25/0215/CND Discharge condition 6 (Strategic Landscape Masterplan) attached to 3/19/1045/OUT, 15th December 2025
- (2) Village 7 - X/25/0225/CND Full Discharge of Condition 10 (Strategic Landscape Masterplan) and Full Discharge of Condition 11 (Strategic Landscape Design Code) Pursuant to Outline Planning Permission 3/19/2124/OUT (Gilston - Village 7), 15th December 2025
- (3) The following is from SLMP Part A, Contexts and Strategies, Executive Summary - “Strategic Landscape Masterplan (SLMP) [which] sets out [Pfp’s & TW’s] the vision for how the existing landscape will be protected, enhanced and transformed to establish a landscape framework ready to accommodate the new level of use and activities, manage and enhance the natural environment, and provide opportunities for leisure and recreation, access and enjoyment of the countryside for existing and future residents.”

The updated documents are available on the EHC Planning by searching X/25/0215/CND and X/25/0225/CND

- (4) Villages 5 & 6 Masterplanning Places for People had said they anticipate community engagement will start end 2025 / early 2026. Nothing publicised yet. Watch out for invitations to become involved.

## iv) Whilst Pfp have not yet commenced community engagement with local residents there appears to be a considerable amount of excavations / ground works related to the archaeological surveys necessary in preparation for Village 5 & 6 masterplanning.

- v) The Neighbourhood Planning Group held no meeting during December 2025, 1st meeting 2026 is scheduled for 17th January.

Anyone who wishes to get involved, please contact us or go to the [hegnp.org.uk](http://hegnp.org.uk) contact page

## vi) Gilston Stakeholder Liaison Group

- (1) These meetings are between the parish councils of Eastwick & Gilston and Hunsdon, Places for People, PFP, and East Herts Council.
- (2) A meeting was held Thursday November 27th 2025. Agenda and discussion points to be published on the Eastwick & Gilston Community website.

vii) Estate Management – Reminder

- (1) Places for People's gilston.info website demonstrated at the February Community Forum

- (a) The website has 3 headings:

- (i) Current Works – a map of current and planned works in the Gilston Area.
- (ii) Report an Issue – a map where any issues, eg tree fallen across a RoW, fly tipping, etc., can be reported
- (iii) News – construction works and developments for the Gilston Area.

viii) Roadworks updates.

- (1) For information on current and upcoming roadworks go to [Causeway one.networkhttps://one.network/uk/hertfordshire](https://one.network/uk/hertfordshire)
- (2) Places for People gilstonparkestate website NEWS page <https://www.gilstonparkestate.com/news/enabling-works-for-gilston-underway/>. Nothing new on roads since 20th December 2024

ix) Useful websites:

- (1) New Eastwick & Gilston Community website <https://eastwickandgilstonparish.gov.uk>
- (2) Village 1 and Strategic Landscape Master Plan <https://www.gilstonparkestate.com/get-involved/>
- (3) Section 106 docs Villages 1 – 6 <https://publicaccess.eastherts.gov.uk/online-applications/applicationDetails.do?activeTab=documents&keyVal=PRSRKCGLO0V00>
- (4) Village 7 <https://www.village7.co.uk>
- (5) Section 106 docs Village 7 <https://publicaccess.eastherts.gov.uk/online-applications/applicationDetails.do?activeTab=documents&keyVal=PZKRYCGL05I00>
- (6) East Herts Community Forums <https://www.eastherts.gov.uk/planning-and-building/community-forums/gilston-area-community-forum>
- (7) East Herts Community Forums <https://www.eastherts.gov.uk/planning-and-building/community-forums/gilston-area-community-forum>

## 68) HIGHWAYS

a) Cllr Harvey reported:

- i) Fly tipping continues to be an issue locally . Reported tipping is dealt with swiftly but it quickly returns. The entrance to Cat Lane from the A414 is a case in point.
- ii) Gilston Lane for the most part seems passable.
- iii) Current works in Harlow and numerous diversions to A414 have contributed to regular congestion at the A414 roundabout by Eastwick Lodge Farm. This affects everyone in Eastwick and Gilston and Terlings Park and are set to continue this time on the roads that will be offering direct access to village 1 .
- iv) Residents of Eastwick who live along the unadopted road managed by Clarion housing continue to complain, reasonably., about the state of the trees and particularly this years increased harvest of crab apples .

This was discussed and a request for clearance made . Very little tree pruning was done and the few grids that are provided remain blocked.

- v) Half of Eastwick Hall lane has been repaired to good effect but beyond the old shoot remains very pitted and will need repair,

#### **69) NEW HOMES BONUS/ INVESTMENT ACCOUNT**

- a) Web site – Cllr Orson reported that the new web site has now gone live. This was discussed and an article in the Parish Magazine will be published again in February with a QR code for residents to access the website.

#### **70) VILLAGE HALL MANAGEMENT COMMITTEE**

- a) Cllr Harvey reported
  - i) There was a balance of approx. £20,000 by year end. I think this can be attributed to an increased and diverse use of the hall as we have not used grants this year.
  - ii) The new booking system c/o the parish website continues to make life easier.
  - iii) Now that the hall deeds have been identified there will be a hopefully speedy conclusion to our bid to register them with the Charities Commission – which will allow safe keeping for them.
  - iv) The hall has been engaged to host an event to promote village halls in the coming year through ACRE Action in Communities with Rural England.
  - v) We continue to attract new bookings, recently ordinary Pilates for Wednesdays and soon Chair Pilates will return on Friday morning. It is hoped all these events will be promoted on Facebook, the parish magazine and WhatsApp groups.
  - vi) Our broadband system is being upgraded to include part fibre. New log in details are provided in hall use book.
  - vii) Our next committee meeting/AGM will be at 19.00 in the village hall on February 16th. From 19.00 it is hoped that we can engage a bigger and supportive committee.

#### **71) CORRESPONDENCE**

- a) Cllr Eric Buckmaster report is attached to these minutes.
- b) Cllr John Dunlop report is attached to these minutes

These reports are not published in the Parish Magazine but can be found with the minutes on the Parish web site.

#### **72) ITEMS BROUGHT FORWARD AT THE DISCRETION OF THE CHAIRMAN FOR INFORMATION ONLY.**

- a) None.

#### **73) ITEMS COUNCILLORS WOULD LIKE TO BE ADDED TO THE NEXT AGENDA.**

- a) None.

#### **74) DATE OF NEXT MEETING**

- a) 9th March – Annual Parish Meeting – Followed by the Parish Council Business Meeting
- b) 11th May – Annual Meeting of the Council – Followed by the Parish Council Business Meeting
- c) 13th July – Parish Council Business Meeting
- d) 14th September – Parish Council Business Meeting
- e) 9th November – Parish Council Business Meeting

Meeting closed at 9.00pm

# 2023 Aerial Photographs

In 2023 Aerial Photographs were taken of our lovely parish. These photographs can be viewed in the Photo Gallery on the website.



You can access the Photo Gallery by going to <http://www.eastwickandgilston.org.uk/gallery.php?id=24> or by scanning the QR code below.

In the Photo Gallery you will see that there are different galleries for different areas of the parish.


We are working on a way to enable people to easily download the photographs for personal use and will hopefully have more information to share on this soon.



## Roadworks and Road Maintenance

Information about roadworks and road maintenance

The [Causeway one.network](https://www.causewayone.network) website informs you of all current and upcoming planned roadworks.

Tap on the Location button  to get to your local area.

To help us keep Hertfordshire's roads up to scratch we need **YOU** to let us know when things are not right! So whether it's a pothole, pavement problem, faulty streetlight, icy road or any other Highway fault, report the issue at [Hertfordshire County Council](https://www.hertfordshire.gov.uk)

You can also [email the Highways service](mailto:highways@hertfordshire.gov.uk) (they will confirm when we receive your message) or phone [0300 123 4047](tel:03001234047) (line open from Monday to Friday 8.30am–5.30pm).

+++++



The start of 2026 kept us warm with interesting stories of coal deliveries in Sawbridgeworth by Peter Agnoli of W.C.T. Bayford, carrying sacks weighing 1 cwt = 50 kilos, costing 10/6d (50p) up flights of stairs, with some people then complaining there was too much dust in the sacks. No holidays were allowed in the winter months. W.C.T. Bayford started in 1928/9 and also worked with coal merchants Bennets for a while. Coal was imported from Poland and Germany. Many in our audience had personal stories – someone who worked for the company Avery which provided the scales for Bayfords – and others who Peter enjoyed discussing interesting events with.

We will hear about the fascinating history of Latton Priory first established in the 12<sup>th</sup> century, at our meeting on March 26<sup>th</sup> in a talk given by John Collier. We meet in the Hailey Centre CM21 9AN – doors open 7pm and talk starts 7.30pm. There will be time to browse our book stall and pick up a copy of our programme, meetings and events for the year. [www.sbwhistory.com](http://www.sbwhistory.com)



# Benefice of High Wych and Gilston with Eastwick

Church website: [stjameshighwych.org.uk](http://stjameshighwych.org.uk)

Facebook: Gilston & Eastwick church's

For all recorded church services go to the Facebook page above.

## MARCH SERVICES 2026

1 <sup>st</sup> March	2 <sup>nd</sup> Sunday of Lent	8.00am	BCP Holy Communion	St James, High Wych
		9.30am	Breakfast and 10.00am Family Service	St James, High Wych
8 <sup>th</sup> March	3 <sup>rd</sup> Sunday of Lent	9.30am	Holy Communion	St James, High Wych
		11.15am	Holy Communion	St Mary's, Gilston
15 <sup>th</sup> March	4 <sup>th</sup> Sunday of Lent Mothering Sunday	9.30am	Holy Communion	St James, High Wych
22 <sup>nd</sup> March	5 <sup>th</sup> Sunday of Lent	9.30am	Holy Communion	St James, High Wych
		11.15am	Family Service	St Botolph's, Eastwick
29 <sup>th</sup> March	Palm Sunday	9.30am	Holy Communion	St James, High Wych

Benefice churches will be open for private prayer. St James, open every day 9.00am to 4.00pm. An information notice is displayed outside the church. St Mary's open every day 8.00am to 4.00pm and for advice on opening of St. Botolph's for private prayer, please contact Rev. Alison Jackson.

**PRIEST IN CHARGE:** Rev'd Alison Jackson

revajacksonhwge@outlook.com

1 Dovedale, High Wych, Sawbridgeworth CM21 0DT

01279 790145

07833 667707

**READER:** Judith Denton, Path Cottage, High Wych Lane, CM21 0JP

01279 723714

**SAFEGUARDING OFFICER:** Cath Sharples

01279 600996

Diocesan Safeguarding Advisor (DSA)

01727 818107

### HIGH WYCH PARISH

**LAY LEADER OF WORSHIP:** Jan Bellingham

01279 724247

### CHURCH WARDENS:

Janet Bellingham

01279 724247

Sam Clark

07717542524

### GILSTON WITH EASTWICK PARISH

### CHURCH WARDENS:

Michael Shaw

01279 726792

We have a vacancy for a Church Warden

### LAY LEADER OF WORSHIP / MISSION ENABLER:

Rosemary Davis

01279 419763

### PCC SECRETARY:

Mrs Christine Law

01279 411646

### PCC TREASURER:

Werner Marx

[marxwerner2@gmail.com](mailto:marxwerner2@gmail.com)



## MOTHERING SUNDAY

*It is the day of all the year*

*Of all the year the one day,*

*And here come I, my Mother dear,*

*To bring you cheer,*

*A – mothering on Sunday*





## March Letter

### Christian and Community – A March Reflection from Alison your Priest

March is a month of movement.

The days begin to stretch, the first brave flowers push through cold soil, and we sense that change is in the air. Spiritually, March often carries us into the season of Lent – a quieter, more reflective time – yet it also whispers of hope, renewal, and the promise of Easter.

At its heart, the Christian faith has always been about relationship: our relationship with God and our relationship with one another. These two cannot be separated. When Jesus was asked to name the greatest commandment, he replied: *“Love the Lord your God with all your heart... and love your neighbour as yourself.”* (Matthew 22:37–39). Faith is never meant to be a private possession. It is something we live out in community.

Across the **Benefice of St James, High Wych, St Mary’s, Gilston and St Botolph’s, Eastwick**, we see this lived out in countless quiet ways. A lift offered to someone who can no longer drive. A meal dropped off when illness strikes. A friendly word in the post office, the school gate, or over the garden fence. These small acts of kindness may seem ordinary, but in God’s eyes they are extraordinary. They are expressions of love, and love is the very language of God.

One practical way we live this out during Lent is through our **40 Day Lent Challenge**. We invite everyone to bring an item of food each day (or as often as you are able) for the local foodbank, using **St James, High Wych as the collection point**. It is a simple but powerful way of turning prayer into action and sharing God’s love in very tangible form.

Church, at its best, is not simply a building or a Sunday service. It is people. It is a network of care, prayer, laughter, and shared life. Whether you attend worship every week, occasionally, or not at all, you are part of this community. The church exists not for itself, but for the world around it – to serve, to listen, and to offer hope.

Lent invites us to pause and ask some gentle questions:

Where is God at work in my life?

How might I grow closer to Him?

Who is God calling me to care for?

Sometimes we think of Lent in terms of giving things up. While that can be helpful, it can be even more powerful to think about taking something up: taking up a habit of prayer, taking up reading a few verses of the Bible each day, or taking up an intentional act of kindness. These small spiritual practices create space for God to shape our hearts.

In a world that can feel increasingly divided and hurried, Christian community offers something different: a place where people are known, valued, and loved. You do not have to have everything sorted. You do not need perfect faith. You simply need to come as you are.

You may be wondering, **“How can I find out more about following Jesus and the Christian faith being part of my life?”** If that question is on your heart, please know that you are very welcome to talk with me or with any member of our church communities. There are many gentle ways to explore faith, ask questions, and discover what it might mean for you.

As we journey through March, my prayer is that we might notice the signs of new life around us – in nature, in our relationships, and in our own hearts. May we be a community that reflects God’s compassion, generosity, and grace in practical ways.

As we journey through Lent we have already had our very popular Messy Church Pancake Party on Shrove Tuesday and our Ash Wednesday service, thank you for all those who attended these lovely events. There is still much more of Easter to enjoy...

**You would be very welcome to join us at any of our Easter services across the Benefice:**

- *Maundy Thursday, 2nd April – 7.30 pm at St James, High Wych*
- *Good Friday Messy Church 3rd April– 10.00 am–12 noon at St James, High Wych*
- *Good Friday Service of Music and Reflections 3rd April – 2.00 pm at St Botolph’s, Eastwick*
- *Easter Vigil Saturday 4th April – 7.00 pm at St Mary’s, Gilston (beginning with a fire pit outside)*
- *Easter Day Family Communion Sunday 5th April– 9.30 am at St James, High Wych*

Whether you come often or have not been to church for some time, you will find a warm welcome. If you would like to meet me in a more informal way we will be running our community dog walks again through the rest of this year. Please look at the flyer for these later in the magazine.

With every blessing for the season ahead,

**Alison**

Priest-in-Charge

+++++

# COMMUNITY DOG WALKS 2026

To help with your planning we have pulled together this year’s organised Dog Walks across the Benefice. All will take place at 2.30pm with refreshments around 3.30pm – 4.00pm. Dogs not required.

- 15<sup>th</sup> March – St James, High wych with refreshments afterwards
- 26<sup>th</sup> April – The Queen’s Head, Allens Green – pub afterwards
- 31<sup>st</sup> May – Terlings Development, Gilston – refreshments afterwards
- 28<sup>th</sup> June – St Mary’s, Gilston – refreshments afterwards
- 26<sup>th</sup> July – St James, High wych- refreshments afterwards
- 16<sup>th</sup> August – The Queen’s Head, Allens Green – pub afterwards
- 6<sup>th</sup> September – St Mary’s, Gilston – refreshments afterwards
- 11<sup>th</sup> October – Terlings Development, Gilston – refreshments afterwards
- 1<sup>st</sup> November – St James, High Wych – refreshments afterwards



For more information contact:

[Revajacksonhwge@outlook.com](mailto:Revajacksonhwge@outlook.com)  
07833667707 or 01279 790145



**Nature Notes by the late Cynthia Howe, long-time nature lover and resident of Gilston**

Friday, 11 March 2011  
Fieldfares

Today was a bright, sunny, mild day, turning cloudy as the day drew on.

I was delighted to wake up this morning and find fieldfares feeding on the side lawn. They are attractive birds, and a member of the thrush family. They are quite different in appearance to both the song and mistle thrush, although in flight are quite like mistle thrushes. They have a grey head and rump, speckles on the sides of their lower chest joining together higher up. The upper part of the chest is a pale golden beige colour changing to white as it goes down and under the body. They have a chestnut brown back and a black or dark grey tail (not sure which). They are quite unmistakable, once seen, easily recognizable next time.

Saturday, 12 March 2011  
Sunny Days

A bright mild sunny day. Several times today we have seen the female pheasant around the garden, sometimes on her own but often with one or the other of the males, it's good to see her and to look forward to seeing her young.

A Brimstone butterfly has again been flying around the garden, sunshine seems to bring out the butterflies and also enlivens the fish. The warmth of the sun on the water at this time of year seems to put them in mating mode, they are very active and can be seen swimming hither and thither and at times leaping out of the water!

So many flowers in bloom, the snowdrops have passed over, but the forsythia is still looking wonderful, and the first camellia is in bloom.

Sunday, 13 March 2011  
Egg Stealing Magpie

A mixed weather day, cloudy, rainy, followed by more cloud and surprisingly at 6:30pm a sudden short burst of sunshine, and within 10 minutes a reversion to the cloud covered sky we had endured all day.

We have two pairs of pigeons living in the garden, one in the mahonia on the bank and the other (No-tail and his partner) nesting in the golden conifer. Today the latter pair were busily mating, so egg laying will soon start.

I have watched with pleasure the courtship, nest building in the cornish palm, and mating of one of the pairs of robins, sadly this morning I witnessed the finding of their nest by a magpie, each time he disappeared into the downward hanging, winter ravaged fronds he reappeared with an egg in his beak. I have not seen this particular pair of robins again today. I hope they haven't been driven from the garden.

Monday, 14 March 2011  
Great Spotted Woodpeckers

Two great spotted woodpeckers spent several minutes in the birch tree this morning. I spent so long watching them that by the time I had gathered my wits and fetched my camera one of them had flown away!

Later in the morning I watched a thrush collecting nesting material on and around the side lawn; the nest is being built in the shrubs in front of the greenhouse.

It was interesting to see the three pheasants, two male and one female, feeding together at tea time today, usually by now there is great rivalry between the males, but at the moment there seems to be a truce. I see the female several times a day now, sometimes she is by herself at other times with one or the other or, as today, even both of the males. Unusually, she doesn't seem to have any preference, however we will see as time goes by.

Tuesday, 15 March 2011  
Blue Tits and Female Pheasant

A new pair of blue tits have arrived at the nesting box outside the conservatory. I saw them checking it out yesterday. I don't know what has happened to the pair who built a nest there a few weeks ago, they haven't been around lately.

Today the new pair have been very busy clearing out all of the still fresh nesting material carefully collected and put in by their predecessors so recently. I hope this pair will stay and breed.

This morning the female pheasant ran across the lawn to the feeding station as I was still putting out the food, and greedily gobbled it up. This was a first as she usually hangs back, hiding in the bushes, then creeping across when she thinks she is unobserved, and scurrying away at the first sign of a human being.

I think she must have been very hungry to approach as she did, perhaps she is egg laying. Whatever the reason it still gave me a warm feeling to think that she trusted me enough to approach in my presence.

+++++

### THE HUNDRED PARISHES SOCIETY

[www.hundredparishes.org.uk](http://www.hundredparishes.org.uk)



Now that Spring is on its way, the weather should encourage us to make more use of bridleways and footpaths. Around 150 walk descriptions are available to download free from our website, [www.hundredparishes.org.uk](http://www.hundredparishes.org.uk). As well as saying when to turn left or right, our route descriptions aim to point out things of interest along the way. Some of these will be marked on the local Ordnance Survey map.

Ordnance Survey (“OS”) has been the UK’s official mapping body since 1791 AD, having originated for military purposes. Its activities have left various physical markers which may still be encountered, albeit that mapping techniques have moved forward in recent times with the satellite-based GPS (global positioning system).

The two historic OS markers that are most likely to be encountered are “triangulation pillars” and “benchmarks”. Several thousand triangulation pillars (also referred to as trig points) were installed all over the UK - solid concrete pillars about 4 feet tall, usually erected at a high point with a clear range of vision. Each has a place on top for positioning a map measurer’s tool, a theodolite. The pillar’s location and height above sea level have been precisely measured and recorded so that from here the map-maker can plot the surrounding landscape.

OS surveyors also left “benchmarks” in thousands of strategic locations. These are additional altitude reference points, a horizontal line indicating height above sea level - chiselled into a wall or milestone from around 1840 until the 1990s. The benchmark was sometimes indicated on a brass plaque attached at the appropriate height. On OS benchmarks, the horizontal line appears above an upward-pointing arrow.



Please look out for trig points and benchmarks. If they are on a Hundred Parishes walk route but not yet mentioned in the description, please let us know.

Ken McDonald, Secretary

# SAWBRIDGEWORTH NEWSLETTER FROM PATIENTS GROUP

E-mail: [patientgroup4sawbosurgery@gmail.com](mailto:patientgroup4sawbosurgery@gmail.com)



**PPG AGM:** Our Patients' Group AGM will be held in May, in the Memorial Hall, when we hope to hear from the new Practice Manager and from one of the GPs. Please look out for further information in the April & May Newsletters.

**Patient Questionnaire:** By now, you should have received the 2026 Patient Questionnaire as a text message from the surgery. If you haven't received the text, you can click on the link on the surgery website, to access the questionnaire. We would be very grateful if as many patients as possible could let us have their views so we can track improvement over time. Please make sure that you have completed the Questionnaire by **31<sup>st</sup> March 2026**.

**Chicken Pox Vaccine:** Children are now being offered the MMRV vaccine, which protects against measles, mumps, rubella and chicken pox (varicella).

They are offered 2 doses of the vaccine when they are 12 months and 18 months old. Older children born on or after 1 January 2020 are also offered 1 or 2 doses of the vaccine.

You may also be offered the chickenpox vaccine on the NHS if there's a risk you could spread the virus to someone who has a weakened immune system. For example, you can be vaccinated if you're living with someone who is having chemotherapy.

**Private Chicken Pox Vaccine:** If your child(ren) is/are over the age of 6 years, it is likely that they may already have had chicken pox but they still remain eligible for their MMR vaccine. Parents who are concerned about their older children, have the option to pay to have the two doses of the Chicken Pox Vaccine at local Pharmacies.

Whilst typical chickenpox causes fever, aches, and an itchy rash that turns from spots to blisters to scabs, it can occasionally become serious and require immediate medical attention. Chicken Pox warning signs include a very high fever, difficulty breathing (coughing, shortness of breath), severe headache, stiff neck, confusion, trouble walking, seizures, severe dehydration, bleeding from blisters, or blisters that look very red, swollen, or filled with pus (signs of bacterial infection). These severe symptoms signal potential serious complications like pneumonia or encephalitis, and need urgent care...

**Health Checks for 40 year Olds: How do I get an NHS Health Check?** If you're aged 40 to 74 and do not have a pre-existing health condition, you should be invited to an NHS Health Check by your GP or local council every 5 years. If you think you are eligible but have not been invited, contact your GP surgery to find out if they offer NHS Health Checks or contact your local council to find out where you can get an NHS Health Check in your area.

## Who is the NHS Health Check for?

The check is for people who are aged 40 to 74 who do not have any of the following pre-existing conditions:

- heart disease
- chronic kidney disease
- diabetes
- high blood pressure (hypertension)
- atrial fibrillation
- transient ischaemic attack
- inherited high cholesterol (familial hypercholesterolemia)
- heart failure
- peripheral arterial disease
- stroke
- currently being prescribed medicines such as statins to lower cholesterol
- previous checks have found that you have a 20% or higher risk of getting cardiovascular disease over the next 10 years

You should already be being offered regular check-ups if you have already been diagnosed with one of these conditions. Your care team will be able to give you more information about this.

# Bereavement



Meet and connect with others who understand

Chat, share and support each other  
Free, informal café-style event  
Facilitated by trained volunteers  
Everyone is welcome

**Where?** The Hailey Centre, Sayesbury Manor,  
Bell Street, Sawbridgeworth, CM21 9AN

**When?** First Tuesday of the month

**Time?** 2-4pm

For more information, please get in touch by calling our  
Bereavement Support Helpline on 01279 967670.

**Bereavement Cafés** aim to connect local people together, to support each other throughout grief. **Everyone is welcome** to access this free, community-led service – whether your loss was recent, or a long time ago.

Our Cafés and online communities (which we host through Facebook), offer a safe space to meet others; speak about our experiences; ask questions; share resources; and make new friends.

**Hertfordshire Constabulary** has adopted Safe and Found Online, a new portal to help quickly locate vulnerable missing people.

They recently launched an initiative that will provide vital support for veterans and individuals living with dementia.

The constabulary is urging family members, friends and carers of those at risk of going missing to register key information about them. This information, stored securely online, can save crucial time in developing a search plan should someone go missing.

Through the new portal, officers can instantly access personal details submitted by individuals or their carers, ensuring searches can begin without delay.

**Safe and Found Online**, the free secure platform behind the initiative, is fully GDPR compliant and uses two-way factor authentication. Carers, family and individuals can update profiles any time, replacing outdated paper forms with a convenient digital solution.

To register free, visit <https://safeandfoundonline.co.uk/index.html>

To report someone as missing, you can do this online at [herts.police.uk/report](https://herts.police.uk/report) , speak to an operator in our Force Communications Room via our online web chat at [herts.police.uk/contact](https://herts.police.uk/contact) or call 999.

+++++



**£12.50 PER BAG**

# LOGS & KINDLING WOOD

## KEEP YOUR HOUSE WARM WITH OUR LOGS

*BARN STORED SEASON HARD WOOD*

**COLLECTION OR DELIVERY**  
THE WOOD YARD, 44 PYE CORNER  
GILSTON, HARLOW CM202RB

 **07 831 185 952**

Published: 4/5/23

**Need to CONTACT THE POLICE?**

Which one IS BEST FOR YOU?

**Follow the 5 STEPS**

**1. RIGHT SERVICE?**  
Is it a police issue or is another service better suited?

**2. CHECK ONLINE?**  
Is the information already on our website? Check online: [www.herts.police.uk](http://www.herts.police.uk)

**3. REPORT ONLINE?**  
Has a crime already happened and you want to report it? Report online: [www.herts.police.uk](http://www.herts.police.uk)

**4. LIVE CHAT/CALL 101**  
Do you want to share some information with us or speak to someone specific? Use live chat, otherwise call 101.

**5. CALL 999**  
Is it an emergency? Is a crime happening right now, or is a life or property at risk? Call 999.

**HELP US TO HELP YOU**  
SCAN THIS CODE TO GET ONLINE QUICKLY




Run by the churches of High Wych & Gilston with Eastwick  
On the first Wednesday of every month  
2:00 pm - 4:00 pm

## Wednesday Welcome

Every 1st Wednesday of the month



Over 55's Welcome for tea, coffee, and cake.  
With a variety of optional activities

2-32 Mabeys walk, High Wych  
CM21 0HN

For more information contact:  
[revajacksonhwge@outlook.com](mailto:revajacksonhwge@outlook.com)  
07833667707  
or: 01279 790145



THE PLUME OF FEATHERS

FISH & CHIPS  
FRY- YAYS!

JUST £10 ALL DAY FRIDAY



£10



THE PLUME OF FEATHERS

*A Special Offer...*

EVERY TUESDAY & WEDNESDAY EVENING

**EAT OUT... AND WE'LL  
HELP OUT!**

WITH

**50% OFF**

ALL OUR MAIN MEALS



*'Small enough to Care,*

*Large enough to Cope'*

Tel: 01279 792472

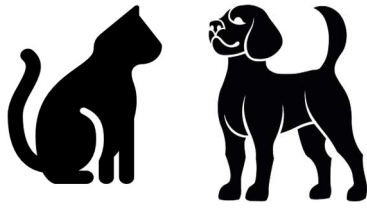
Mob: 07946 617060

Web site:

[www.hamletbuilders.co.uk](http://www.hamletbuilders.co.uk)

- \*New Builds
- \*Extensions
- \*Loft Conversions
- \*Refurbishments
- \*Conservatories
- \*Brickwork
- \*Driveways/Patios
- \*Garage Conversions
- \*Groundworks

# Jane's Small Pet Sitting



Pets are always happier staying at home while you are away. So, I will be able to stay with them if that is the service you require.

Be assured that your home as well as you pet/s is being looked after.

I also offer dog walking and dog sitting services.

Call me on **07779 587076** or e mail me at [jqalp@yahoo.co.uk](mailto:jqalp@yahoo.co.uk)

to arrange for a free visit to meet you and your pets.

I am fully insured and Pet First Aid Trained.



## H Longman

CARPENTER / GENERAL BUILDER



- 
- Sole Trader 40 years – Free Estimates
- 
- **Tel. 07884 491436**
- **Email. rhlongman@google.com**

## WHEN USING OUR PUBLIC RIGHTS OF WAY PLEASE BE AWARE

Please make sure your dogs are always under control and if not on leads in your sight.

Always clean up your dog's poo because it can cause illness in people, livestock and wildlife.

## NEVER LEAVE BAGS OF DOG POO AROUND, EVEN IF YOU INTEND TO PICK THEM UP LATER.

Deodorised bags and containers can make bags of dog poo easier to carry. If you cannot find a public waste bin, you should always take it home and use your own bin.



### NEXT SESSION

**Good Friday 3<sup>rd</sup> April**  
High Wych  
Memorial Hall  
(10:00am - 12:00pm)

This is a free, all-age, family friendly event focused on having fun and creating time for us to come together and hear the stories of Jesus, plus other bible stories, and growing as a community.

We will do crafting, singing, listen to a story then eat some yummy food together what could be

better.

# Christopher THE LOCKSMITH

## ARE YOUR LOCKS BEHAVING BADLY?


We Value Old Fashioned Customer Service  
A Local Trusted Family Business Since 1989

 Specialist in UPVC & Wooden Doors

 No Call Out Charge

 No Fix No Fee

 All Work Fully Guaranteed

 10% Senior Citizen Discount



For More Advice & Help Call Christopher:

# 07772 111 222

[www.christopherthelocksmith.co.uk](http://www.christopherthelocksmith.co.uk)

## The Sawbridgeworth Trust Registered Charity 237946

The Sawbridgeworth Trust exists for those who are often finding themselves in financial difficulties by way of perhaps not meeting all bills that come in on a regular basis.

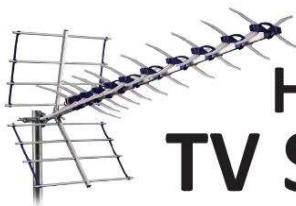
We are often called upon to help with school uniforms or perhaps a small bonus at Christmas.

We are not allowed to pay rents or council Tax.

The charity covers those living in Sawbridgeworth, High wych, Gilston, Eastwick and Allens Green.

You will be required to fill in an application form and total confidentiality is adhered to at all times.

In the first instance please apply to the Clerk.  
Mrs Di Kitson  
11 The Forbury, Sawbridgeworth CM21 9BD  
Or telephone 01279 7232123



## HERTFORD TV SERVICE

Please call: 01992 552955

- AERIALS & SATELLITE INSTALLATIONS/REPAIRS
- TV REPAIRS (OLED, LCD, LED)
- TV WALL MOUNTING & SOUNDBARS
- WIFI SYSTEMS & DATA NETWORKING
- CCTV & WIRELESS BURGLAR ALARM SYSTEMS
- STARLINK INSTALLATIONS 

[www.hertfordtvservice.co.uk](http://www.hertfordtvservice.co.uk)

Unit 1B, Foxholes Avenue, Hertford SG13 7JG  
LOCAL FAMILY BUSINESS EST 1979  
ALL WORK FULLY GUARANTEED



### Are you struggling with your energy bills?

If you live in Sawbridgeworth, High Wych, Gilston, Eastwick or Spellbrook and your financial situation meets the criteria, you may be eligible for assistance from **The Sawbridgeworth Charitable Trust**.

For more information, please contact our clerk:  
Di Kitson on 01279 723212 or email: [diana.kitson@btinternet.com](mailto:diana.kitson@btinternet.com)



# JIMMY'S

Baby & Toddler Group

Every Thursday morning  
From 9.30am to 11.30am  
at High Wych Memorial Hall  
(term time only)

Healthy snacks will be provided

£2 per session, per family  
For childminders: £2 per child



Scan the code above to pay securely online



**Dog Walking In  
Eastwick + Gilston  
Group Walks, 1-2-1 Walks,  
Home Holiday Visits, Small  
Animal Care, Cat Visits  
First Aid Trained, Fully Insured**

**Tel: 07747606818**



## ADVERTISING

ARE YOU INTERESTED IN ADVERTISING YOUR  
LOCAL BUSINESS IN  
‘THE EASTWICK AND GILSTON PARISH  
MAGAZINE’?

YOUR ADVERT WILL REACH 370 LOCAL  
HOMES EVERY MONTH.

CHECK OUT OUR HIGHLY COMPETITIVE  
RATES BELOW AND CONTACT US TODAY.

**ALL EDITIONS OF THE MAGAZINE ARE  
PRINTED IN A4 AND IN BLACK AND WHITE.**

**¼ page £90.00 per year - per month £30.00**

**½ page £110.00 per year – per month £40.00**

**Full page £220.00 per year – per month £50.00**

DO YOU HAVE A SMALL ITEM THAT YOU  
WOULD LIKE TO SALE?

DO YOU HAVE AN ARTICLE YOU THINK MAY  
BE OF INTEREST TO THE  
READERS

AN ACTIVITY THAT HAPPENS WITHIN OUR  
TWO VILLAGES THAT YOU WOULD LIKE  
ADVERTISED OR SOME INFORMATION THAT  
YOU WOULD LIKE TO GO ONTO THE  
EASTWICK AND GILSTON PARISH  
COMMUNITY WEB SITE?

**CALL OR E-MAIL THE EDITOR:**

**CHRISTINE LAW**

01279 411646

## DANIEL ROBINSON & SONS

**Independent  
Family Funeral Directors  
Monumental Masons**

*Est. 1892*

**A personal caring service, day or night  
Fully trained & qualified staff  
Purpose built premises & Chapels of Rest  
Pre-paid Funeral Planning**

**Arrangements may be made in the comfort  
of your own home**

**3 Bullfields**

**Sawbridgeworth**

**Tel: (01279) 722476**

**Wych Elm**

**Harlow**

**Tel: (01279) 426990**

**Station Road**

**Old Harlow**

**(01279) 626238**



**www.drobinson.co.uk**

# VILLAGE DEFIBRILLATORS

We have four defibrillators within our two villages and they can be found at:

**Gilston & Eastwick Village Hall, Pye Corner – CM20 2RB**

Can be found on the outside at the front of the building by the notice board.



**The Lion Public House, Eastwick – CM20 2QP**

Can be found in the covered area to the right of the pub courtyard.

**St Mary's Church, Gilston Lane, Gilston – CM20 2RJ**

Can be found in the porch as you enter the church on the right-hand side.

**Terlings Park, Kirkpatrick Place – CM20 2FX**

Can be found outside of the entrance gates beside the intercom.

The defibrillator is designed to be very easy to use and talks you through what you need to do step by step.

If you are in the unfortunate position of needing to use it you simply

Phone 999

You will be given the code to open the cabinet and then supported by the  
Emergency Services



111 is the NHS non-emergency number. It's fast, easy and free. Call 111 and speak to a highly trained adviser, supported by healthcare professionals. They will ask you a series of questions to assess your symptoms and immediately direct you to the best medical care for you.

**NHS 111 is available 24 hours a day, 365 days a year. Calls are free from landlines and mobiles.**

+++++

## CLOTHES BANK VILLAGE HALL, PYE CORNER, GILSTON

TO ALL RESIDENTS



THE CLOTHES BANK CAN BE FOUND AT THE BACK OF THE VILLAGE HALL IN ITS CAR PARK.

WE NOW HAVE A CLOTHES BANK FOR YOU TO USE.  
IT TAKES ONLY OLD CLOTHES, HANDBAGS, BELTS AND SHOES (PLEASE MAKE SURE ALL ITEMS ARE IN BAGS).

IT WILL NOT TAKE – SOILED RAGS, CARPET, RUGS, BLANKETS, TOWELS, SHEETS, GLASS, METAL, PAPER OR RUBBISH.  
THIS WILL BE EMPTIED ONCE A WEEK FOR US.

+++++

THE EASTWICK AND GILSTON PARISH MAGAZINE MONTHLY DEADLINE FOR ARTICLES IS THE 16<sup>TH</sup> OF EACH MONTH – TO BE SENT TO IN A WORD DOCUMENT:  
[christine.law2@btinternet.com](mailto:christine.law2@btinternet.com)

The Parish Magazine is printed for us by: Shogun Print, Shogun House, Unit 2 Wilems Works, Forest Road, Hainault, Essex IG6 3HJ 07956 301 169 –  
[e.mail: neale@shogunprint.com](mailto:e.mail: neale@shogunprint.com) – [web site www.shogun-print.com](http://www.shogun-print.com)

Harlow Theatre Company presents



# Murder at the Parish Hall

An interactive Murder Mystery  
set in the 1920's. (1920's outfits encouraged)

7.30 Saturday 28<sup>th</sup> March

High Wych Memorial Hall

Tickets £15 - includes Ploughman's Supper  
(bar opens at 7pm)



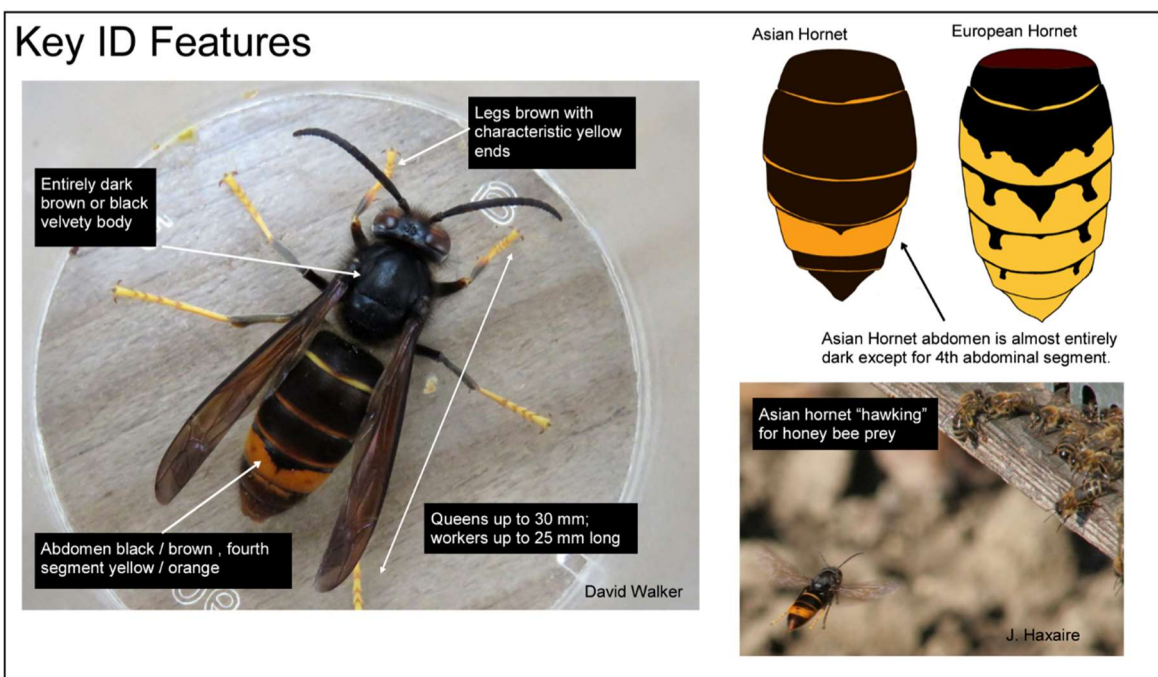
Please use your phone camera to book tickets with this code image,  
and let us know who is attending and any dietary requirements

[4kateclark@gmail.com](mailto:4kateclark@gmail.com)

All Proceeds to High Wych, Gilston & Eastwick Churches

# LOCAL BEEKEEPERS URGE PUBLIC TO JOIN FIGHT AGAINST DESTRUCTIVE INVASIVE SPECIES

- Beekeepers across Hertfordshire and Essex are calling on the public to help spot and report Asian Hornet sightings as we head towards spring
- The destructive insect poses the greatest threat to our pollinators, including honey bees, in a generation, when many native species are already threatened
- More UK nests were discovered in 2023 than in the previous six years combined
- The estimated losses to the economy in the UK if the Asian hornet establishes is estimated to be in excess of £30-45 million ever year
- The Non-Native-Species Secretariat estimate that if the UK lost all its pollinators, not just honey bees, it would cost the economy £440 million per year or about 13% of the UK's income from farming.



The public are being urged to stay vigilant, and encouraged to report any suspected sightings on the Asian Hornet Watch app, which is available to download on iOS and Android, using the QR code below.



Reporting a possible sighting of an Asian Hornet is quick, free, and easy and has the potential to make a huge difference in the fight against this invasive species.

Members of the Hertfordshire Beekeepers' Association are available for interview: please contact (Simon Rice – 078796 42550) Further information including how to identify Asian Hornets, and the latest updates, can be found on the British Beekeepers Association [BBKA] and National Bee Unit websites here:

<https://www.bbka.org.uk>

<https://www.nationalbeeunit.com>